

Casting

Casting a centrepin may be a difficult skill to learn, but after some practice, it will become second nature. For those who master it, the ability to cast a float into the exact position becomes a pleasure in itself.

When learning to cast, use larger floats as they are more forgiving and less likely to tangle if you miss your timing. Start by fishing at short range and slowly increase your range as you improve your timing and accuracy. Particularly with the side cast, focus on keeping your hand open to allow the line to flow through it, as the natural tendency is to make a fist on the cast.

KEY TO SUCCESS:

Don't be afraid to ask for help from your local retailer or fellow float fisherman if you have trouble learning to cast. You can view instructional videos on casting at:

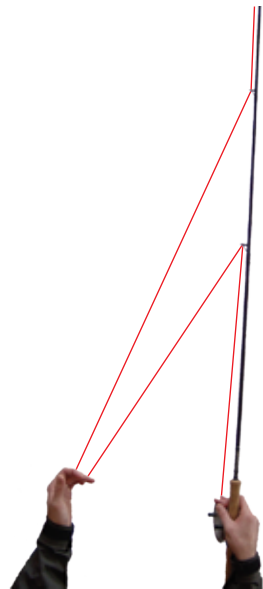
www.raventackle.com

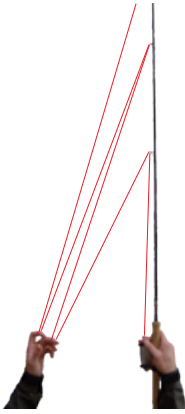
SINGLE AND DOUBLE LOOP CAST

The single loop cast is great for beginners and when fishing in tight quarters, where there isn't enough room for a back cast. A single loop cast can reach about 25 to 30 feet, while a double loop cast has a range of 35 to 45 feet.

SINGLE LOOP

- (1) Take a loop of line from above the first rod guide and draw it back to the reel, allowing the spool to give line as you pull.
- (2) Release the loop of line as you cast out the float.





DOUBLE LOOP

- (1) Take two loops of line, one from above the first guide and one from above the second guide.
- (2) Draw them both back towards the reel, allowing the spool to give line as you pull.
- (3) Release the loops of line, in sequence, as you casts out.

SIDE CAST

This is the most popular casting method in the Great Lakes region. It is fairly easy to master and achieves good distance. However, the side cast does cause line twist, requiring the line to be changed frequently. To maximize casting distance, it is best to fill the spool to 1/4" from the edge of the lip.

- (1) Cup your left hand with your thumb pointing towards you.
- (2) Hook your fingers over the line between the spool and the first guide (your palm should still be facing down).
- (3) While using the right hand to prevent the line from falling off the spool, draw the line to a point exactly perpendicular to the face of the reel at about 12 to 15 inches away. The line should follow an "L" shaped path from the spool through your cupped left hand and up to the first guide.
- (4) Release the line with the right hand while casting out the float. The left hand must remain cupped (at a perfect right angle to the face of the spool) and allow the line to flow off of the face of the spool and over your fingers.



SPINNING SIDE CAST

This cast is used to achieve greater distance and less line twist than the side cast. It is slightly more difficult to master, but well worth learning - particularly when running larger floats.

- (1) Take the line between the first guide and the reel, as you did for step (1) and (2) of the standard "Side Cast".
- (2) Pull down on the line to start the spool spinning and cast the float out at the same time.
- (3) Immediately position the left hand at a perfect right angle to the face of the spool, while allowing line to flow over the fingers.
- (4) Using the right hand, stop the reel from spinning at the end of the cast.

WALLIS CAST

The Wallis or Pull Cast requires the most skill to use proficiently, as its success is based on timing, how hard the line is pulled off the reel and the distance being cast. This cast allows relatively light tackle to be cast a good distance and eliminates line twist. To help reduce overruns, make sure to fill the spool to only about half its capacity.

- (1) With the left hand, grip the line just above the spool.
- (2) Draw the line down (to position A), in a quick and smooth movement, to start the spool spinning and simultaneously cast out the float.
- (3) Using the left hand, guide the line back to the reel (position B) as the fingers on the right hand feather the spool to avoid any overruns.
- (4) Stop the reel from spinning with the right hand as the float lands in the water.

